

Contact person RISE
Mikael Ragneheim
Safety
+46 10 516 56 44
mikael.ragneheim@ri.se

Date
2017-10-23

Reference
7P07479

Page
1 (5)

Areco Profiles AB
Vinkelgatan 13
211 24 MALMÖ

Calculation under fire condition of capacity of roofing system

(1 appendix)

Executive Summary and Conclusions

This report details the results and the calculation method used to determine the capacity of the ARECO TP200-420 roof product under fire conditions. The approach taken was analytical, and comprised the following stages:

- determining the temperature of the steel using a finite difference approximation accounting for both radiation and convection and based on a standard fire
- calculating the tensile capacity of the deck based on the temperature dependent yield strength of steel
- calculating the maximum load which the deck is capable of supporting in a catenary

The approach taken is in line with EN 1991:2009 Actions on Structures - Part 1-2 Actions on Structures Exposed to Fire and on EN 1993:2005 Design of Steel Structures - Part 1-2 General Rules, Structural Fire Design. The calculation method used is described in Appendix 1. The scope of the study was limited to the spans and thicknesses reported in the Areco TP200-420 cross-sectional data. The deck is shown schematically in Figure 1.

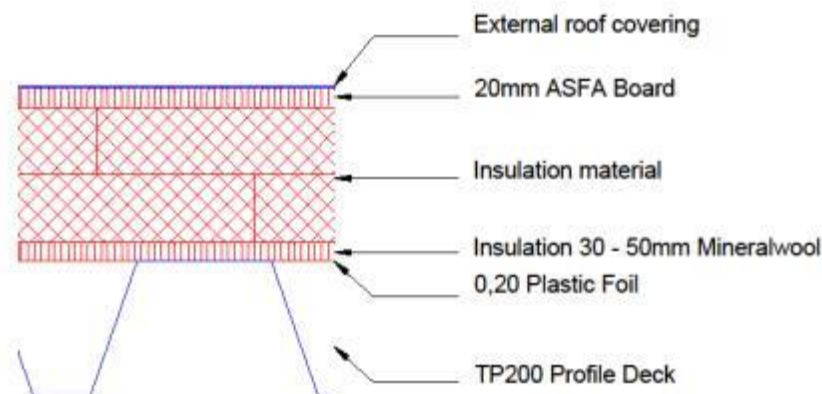


Figure 1 – Principle of insulation of TP200-420 roofing system

RISE Research Institutes of Sweden AB

Postal address	Office location	Phone / Fax / E-mail
Box 857	Brinellgatan 4	+46 10 516 50 00
SE-501 15 BORÅS	SE-504 62 BORÅS	+46 33 13 55 02
Sweden		info@ri.se

This document may not be reproduced other than in full, except with the prior written approval of RISE.

The membrane effect used in the calculation is based upon the tensile resistance of the deck which is mobilized by large displacements which occur under fire – leading to the ‘hanging cable effect’, Figure 2. For the tensile forces to be available the connection at the vertical support needs to be protected so that it provides horizontal restraint. It is assumed in this study that adequate protection is provided to the connections.

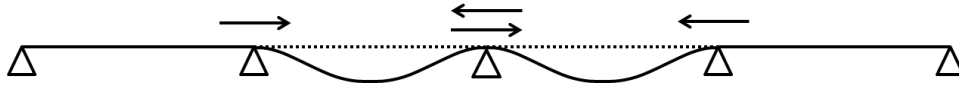


Figure 2 – Principle of the membrane action which supports the load on the roof

It is assumed in the calculation that the upper surface of the steel is adiabatic. This is a conservative assumption that has been made since the insulation material is not provided as part of the roof deck and therefore no information is available on the thermal properties of the materials. The limiting factor for insulation materials is therefore the self-weight rather than the thermal properties.

In order to make use of the bearing capacity in fire, the connections and roofing members should be protected internally and the underside of the deck should be protected a minimum of 500mm on either side of the connection detail, Figure 3. The end bays should be protected in their entirety since there are no adjacent bays to provide horizontal support to the membrane mechanism. The thickness and density of fire protection provided should be consistent with the fire resistance which the roof is being designed for. The supplier of the protection material should provide details of the thickness required and this will vary with the material used.

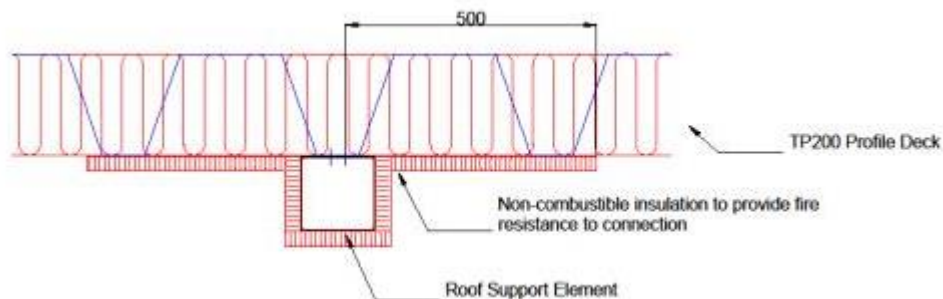


Figure 3 – Principal for protection of connection detail

The results of the study are presented in Tables 1 to 3.

Table 1 shows the capacity for various spans and thicknesses at different fire exposure times of the TP200-420 roof deck. Table 2 shows the maximum deflection of the TP200-420 as a lower bound based on the thermal loading only and is therefore presented for various spans at different fire exposure times – since mechanical loading is not included in this deflection the thickness of the deck is not a factor in this calculation. Table 3 shows the horizontal loading of the TP200-420 at the supports for different thicknesses as a result of the membrane mechanism.

Thickness (mm)	Fire resistance	Capacity (kN/m ²)																							
		Span (m)																							
		4,2	4,5	4,8	5,1	5,4	5,7	6	6,3	6,6	6,9	7,2	7,5	4,2	4,5	4,8	5,1	5,4	5,7	6	6,3	6,6	6,9	7,2	7,5
0,7	R15	13,12	12,25	11,48	10,81	10,21	9,67	9,19	8,75	8,35	7,99	7,65	7,35	13,12	12,25	11,48	10,81	10,21	9,67	9,19	8,75	8,35	7,99	7,65	7,35
0,7	R30	6,62	6,18	5,79	5,45	5,15	4,88	4,63	4,41	4,21	4,03	3,86	3,71	6,62	6,18	5,79	5,45	5,15	4,88	4,63	4,41	4,21	4,03	3,86	3,71
0,7	R60	3,96	3,70	3,47	3,26	3,08	2,92	2,77	2,64	2,52	2,41	2,31	2,22	3,96	3,70	3,47	3,26	3,08	2,92	2,77	2,64	2,52	2,41	2,31	2,22
0,8	R15	15,07	14,07	13,19	12,41	11,72	11,10	10,55	10,05	9,59	9,17	8,79	8,44	15,07	14,07	13,19	12,41	11,72	11,10	10,55	10,05	9,59	9,17	8,79	8,44
0,8	R30	7,58	7,07	6,63	6,24	5,89	5,58	5,30	5,05	4,82	4,61	4,42	4,24	7,58	7,07	6,63	6,24	5,89	5,58	5,30	5,05	4,82	4,61	4,42	4,24
0,8	R60	4,53	4,23	3,96	3,73	3,52	3,34	3,17	3,02	2,88	2,76	2,64	2,54	4,53	4,23	3,96	3,73	3,52	3,34	3,17	3,02	2,88	2,76	2,64	2,54
0,9	R15	17,27	16,12	15,11	14,22	13,43	12,72	12,09	11,51	10,99	10,51	10,07	9,67	17,27	16,12	15,11	14,22	13,43	12,72	12,09	11,51	10,99	10,51	10,07	9,67
0,9	R30	8,65	8,07	7,57	7,12	6,72	6,37	6,05	5,76	5,50	5,26	5,04	4,84	8,65	8,07	7,57	7,12	6,72	6,37	6,05	5,76	5,50	5,26	5,04	4,84
0,9	R60	5,17	4,82	4,52	4,25	4,02	3,81	3,62	3,44	3,29	3,14	3,01	2,89	5,17	4,82	4,52	4,25	4,02	3,81	3,62	3,44	3,29	3,14	3,01	2,89
1	R15	19,13	17,86	16,74	15,76	14,88	14,10	13,39	12,76	12,18	11,65	11,16	10,72	19,13	17,86	16,74	15,76	14,88	14,10	13,39	12,76	12,18	11,65	11,16	10,72
1	R30	9,55	8,91	8,35	7,86	7,43	7,04	6,68	6,37	6,08	5,81	5,57	5,35	9,55	8,91	8,35	7,86	7,43	7,04	6,68	6,37	6,08	5,81	5,57	5,35
1	R60	5,70	5,32	4,99	4,69	4,43	4,20	3,99	3,80	3,63	3,47	3,32	3,19	5,70	5,32	4,99	4,69	4,43	4,20	3,99	3,80	3,63	3,47	3,32	3,19
1,2	R15	23,16	21,62	20,27	19,08	18,02	17,07	16,21	15,44	14,74	14,10	13,51	12,97	23,16	21,62	20,27	19,08	18,02	17,07	16,21	15,44	14,74	14,10	13,51	12,97
1,2	R30	11,47	10,71	10,04	9,45	8,92	8,45	8,03	7,65	7,30	6,98	6,69	6,42	11,47	10,71	10,04	9,45	8,92	8,45	8,03	7,65	7,30	6,98	6,69	6,42
1,2	R60	6,83	6,38	5,98	5,63	5,31	5,03	4,78	4,55	4,35	4,16	3,98	3,83	6,83	6,38	5,98	5,63	5,31	5,03	4,78	4,55	4,35	4,16	3,98	3,83
1,5	R15	29,25	27,30	25,59	24,09	22,75	21,55	20,47	19,50	18,61	17,80	17,06	16,38	29,25	27,30	25,59	24,09	22,75	21,55	20,47	19,50	18,61	17,80	17,06	16,38
1,5	R30	14,30	13,35	12,51	11,78	11,12	10,54	10,01	9,53	9,10	8,70	8,34	8,01	14,30	13,35	12,51	11,78	11,12	10,54	10,01	9,53	9,10	8,70	8,34	8,01
1,5	R60	8,49	7,92	7,43	6,99	6,60	6,25	5,94	5,66	5,40	5,17	4,95	4,75	8,49	7,92	7,43	6,99	6,60	6,25	5,94	5,66	5,40	5,17	4,95	4,75

Table 1 – ARECO TP200-420 Capacity under fire conditions

Fire resistance	Deflection (m)											
	Span (m)											
	4,2	4,5	4,8	5,1	5,4	5,7	6	6,3	6,6	6,9	7,2	7,5
R15	0,241	0,258	0,276	0,293	0,310	0,327	0,345	0,362	0,379	0,396	0,414	0,431
R30	0,258	0,277	0,295	0,313	0,332	0,350	0,369	0,387	0,406	0,424	0,443	0,461
R60	0,274	0,293	0,313	0,332	0,352	0,372	0,391	0,411	0,430	0,450	0,469	0,489

Table 2 – ARECO TP200-420 deflection under fire conditions (lower bound based on thermal loading only)

Thickness (mm)	Fire resistance	Horizontal Reaction (kN)
0,7	R15	119,99
0,7	R30	56,54
0,7	R60	31,92
0,8	R15	137,89
0,8	R30	64,72
0,8	R60	36,50
0,9	R15	158,10
0,9	R30	73,88
0,9	R60	41,61
1	R15	175,29
1	R30	81,60
1	R60	45,90
1,2	R15	212,48
1,2	R30	98,07
1,2	R60	55,03
1,5	R15	268,89
1,5	R30	122,33
1,5	R60	68,39

Table 3 – ARECO TP200-420 horizontal reaction for different thickness of roof deck at different exposure times

RISE Research Institutes of Sweden AB
Safety - Fire Research, Fire Resistance

Performed by

Examined by

Mikael Ragneheim

Patrik Johansson

Appendix

Appendix 1 - Calculation Method

Appendix 1

Appendix 1 - Calculation Method**A.1 Thermal response**

The thermal response is calculated based on EN1991-1-2:2009. The temperature time curve used is that for a standard fire, EN 1363-1. Because of the insulation on the steel deck, heat losses to ambient are ignored. The total heat flux to the surface is given by:

$$\dot{q}_{net} = \dot{q}_c + \dot{q}_{rad}$$

The convective heat flux is given by:

$$\dot{q}_c = h_c(\theta_f - \theta_s)$$

Where h_c is the convective heat transfer coefficient, $25\text{W/m}^2\text{K}$ according to Eurocode 1, θ_s is the steel temperature and θ_f is the fire temperature.

The radiative heat flux is given by:

$$\dot{q}_r = h_{rad}(\theta_f - \theta_s)$$

Where h_{rad} is the radiative heat transfer coefficient, $h_{rad} = \varepsilon\sigma(\theta_f^2 + \theta_s^2)(\theta_f + \theta_s)$, ε is the emissivity of the steel (in this case assumed to be 0.8) and σ is the Stefan Boltzman constant.

The temperature in the steel, θ_s , may then be obtained from the forward difference approach:

$$\theta_s(t + \Delta t) = \frac{\dot{q}_{net}\Delta t}{\rho_s c_{ps} d_s} + \theta_s(t) \quad [1]$$

ρ_s , c_{ps} and d_s are the density, the specific heat and the thickness of steel respectively.

A.2 Tensile Capacity

The membrane capacity is based upon the tensile resistance of the roof deck. This means that all bending, or flexural capacity, is ignored in the calculation and the determination of the capacity is based upon the ability of the roof to 'hang' in tension. This means that there are large horizontal 'pull-in' forces generated at the supports. These forces are restrained by adjacent roof deck panels which generate equivalent forces in adjacent bays.

From Eurocode 3, the resistance of a tension member in fire conditions is given by:

$$T(\theta) = k_{y,\theta} T_{amb} \quad [2]$$

where T_{amb} is the tensile resistance of the member at ambient, and $k_{y,\theta}$ is the reduction factor of the yield stress at temperature θ .

Appendix 1

A.3 Mechanical Response

The roof deck deflected shape and boundary conditions is shown in Figure A1. The deflection is labelled δ and varies with position (x) along the span. The maximum deflection, δ_{\max} , occurs at the mid span. Based on the temperature alone, the total length, L_T , is given by:

$$L_T = L(1 + \alpha\Delta\theta_s)$$

Where L is the original length or the length between the supports, α is the coefficient of thermal expansion and $\Delta\theta_s$ is the change in temperature from ambient. Approximating the deflected shape as a quadratic, the maximum deflection is therefore given by:

$$\delta = L \sqrt{\frac{3}{8} \alpha \Delta \theta_s} \quad [3]$$

At the supports, there is a horizontal reaction component as a result of the tension in the deck at midspan, there is also a vertical shear reaction as well as the resultant tension in the roof deck. The load applied, q , is constant across the deck.

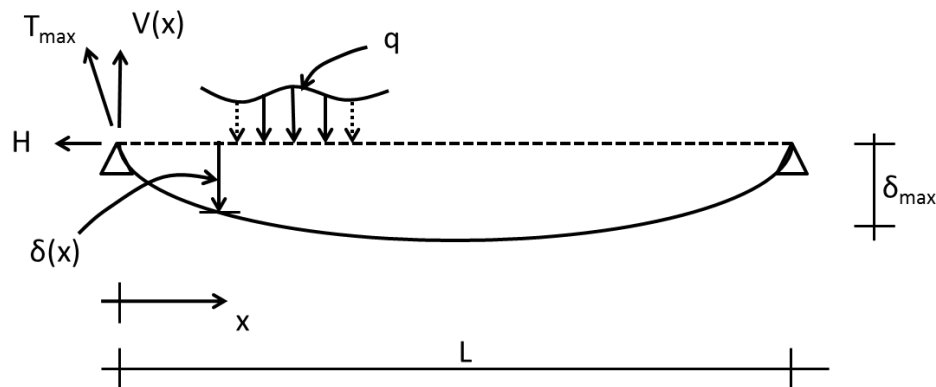


Figure A1 – The boundary conditions and deflected shape of the deck

Taking account of symmetry, and taking moments about one of the supports, the horizontal reaction in the deck can be determined to be:

$$H = \frac{qL^2}{8\delta} \quad [4]$$

Considering the variation in shear and tension across the span, the tension in the roof system is equal to the resultant of these two forces, Figure A2. From equilibrium, the horizontal force is constant across the span of the deck. The shear force at any point, x , is given by:

$$V(x) = \frac{q(L - x)}{2}$$

The membrane force at x is given by:

$$T(x) = \sqrt{V(x)^2 + H(x)^2}$$

Appendix 1

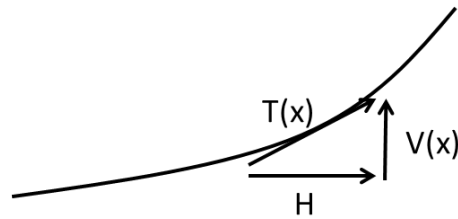


Figure A2 – Components of the force in the deck

At the supports of the floor, the shear force is at its highest, and therefore the membrane reaction in the roof deck is also highest, and is given by:

$$T_{max} = \sqrt{\left(\frac{qL}{2}\right)^2 + H^2} \quad [5]$$

By combining equations 4 and 5, the following expression is obtained for the maximum tension in the roof deck:

$$T_{max} = \sqrt{\frac{q^2L^2}{4} + \frac{q^2L^4}{64\delta^2}}$$

Rearranging this, the following expression for q is obtained:

$$q = \sqrt{\frac{T_{max}^2}{\left(\frac{L^2}{4} + \frac{L^4}{64\delta^2}\right)}} \quad [6]$$

Inserting into Equation 6 the maximum deflection and the maximum resistance of the deck calculated as a tension member, as shown above, we obtain the ultimate capacity of the deck, Q_{ult} .

A.4 References

1. Tvärsnittsdata TP200-420MPa
2. EN 1991:2009 Actions on Structures - Part 1-2 Actions on Structures Exposed to Fire
3. EN 1993:2005 Design of Steel Structures - Part 1-2 General Rules, Structural Fire Design
4. EN 1363-1:1999 Fire resistance tests – Part 1: General requirements